

Offshore Jackup Drilling Rig 300 Ft Water Depth | 410 Ft Leg Length

GENERAL INFORMATION

Name : Rig #101
Year Re-Built : 2019 | 1976 Built fully upgraded ABS Certified
Design : MLT 84 Class
Builder : Marathon LeTourneau, Shipyard USA
Status : Active, ABS Class
ABS Class Notations: A1, Mobile Offshore Drilling Unit

TECHNICAL SPECIFICATIONS

Main Dimensions
Length : 247 ft -7 in; **Breadth**: 227 ft -5 in; **Depth**: 26 ft
Legs : 3 x 410 ft Square Truss
Leg Spacing : Longitudinal leg centres 129 ft;
transverse leg centres 142 ft
Spud cans : 46 ft diameter x 24 ft high
Cantilever : 41 ft x 50 ft (Slot to upgraded)
Helideck : S-61; diameter 70 ft

OPERATIONAL PARAMETERS

Water Depth : 300 ft (17 ft - 300 ft)
Maximum Drilling Depth: 20,000 ft with 5 in DP
Available length below hull including 5 ft margin Air Gap: 80 ft
Transit Speed : 5 knots
Survival Conditions –Criteria Design; wind: 100 Knots; waves period: 13 sec; wave height: 44 ft
Jacking and skidding system: Marathon LeTourneau AC electric rack and pinion, 90 ft/HR

WELL CONTROL SYSTEMS

BOP : 13-5/8", 10000 psi
BOP CONTROL SYSTEM/ ACCUMULATOR UNIT:
3000 psi WP. Comply with API 16D Tested
BOP Handling : 2 x 30MT Pneumatic BOP Hoist
Certified to +1.5x fill stack weight
Choke and Kill : 3-1/16" x 10,000psi x 2 HCR & 2 manual

CAPACITIES

Liquid Mud : 1605 bbls
Bulk Mud / Cement: 6240 cu.ft
Sacks : 2500 sacks
Drill Water : 10540 bbls
Potable Water : 1294 bbls
Fuel Oil : 4727 bbls
Base Oil : 563 bbls
Preload Tanks (include combination tanks): 15542 kips

DRILLING EQUIPMENT

Derrick : Dreco 170 ft x 30 ft x 30 ft x 1,500,000 lbs.
Cantilever Load : 1,310,000 lbs.
Draw works : 1320 x UE 2000HP National Oilwell; wire 1 1/2". Electric brake: model 7838 Baylor
Rotary Table : Model C-375 National Oilwell 37 1/2", driven by 1 D79 EMD motor
Top Drive : Model TDS-4H Varco BJ 650 TON, with Pipe Handler model PH-85
Travelling : Continental Emsco 760H 650 TON
Crown Block : National OilWell 760FA
Mud Pumps : 2+1 National Oilwell model 12-P-160 Triplex - 5000 psi.
Stand pipe 5 in x 5000 psi
(Only 2 mud pumps and space for additional 1xMud pumps inside the pump room)
Main Power : 3 EMD 16-645-E8 Engines 6600 HP, generators AB20-N6 x 1,575 kW 600 V
Emergency Power : 1xCat 3412-TA 719 HP Diesel engine

MUD EQUIPMENTS

All New Mud cleaners (4) MI Swaco;
Desilter (1) MI Swaco; Degasser, Rig Vacuum MI Swaco.
Cementing Unit : 2 electric triplex pumps. 15000 PSI, 14 BPM
Control System : Air/electric powered
Water maker : Model NH75463+APC, FCI
Sewage Treatment : Model RF 4000-M; Red Fox

ACCOMMODATIONS

96 berths, eight beds for quarantine cases

OFFSHORE CRANES

3 X MLT PCM 120 AS

Model PC-120AS Marathon Letourneau; Boom: 2 @ 120' Max. load 90000 lbs
Model PC-120AS Marathon Letourneau; Boom: 1 @ 100' Max. load 90000 lbs



DECK VIEW



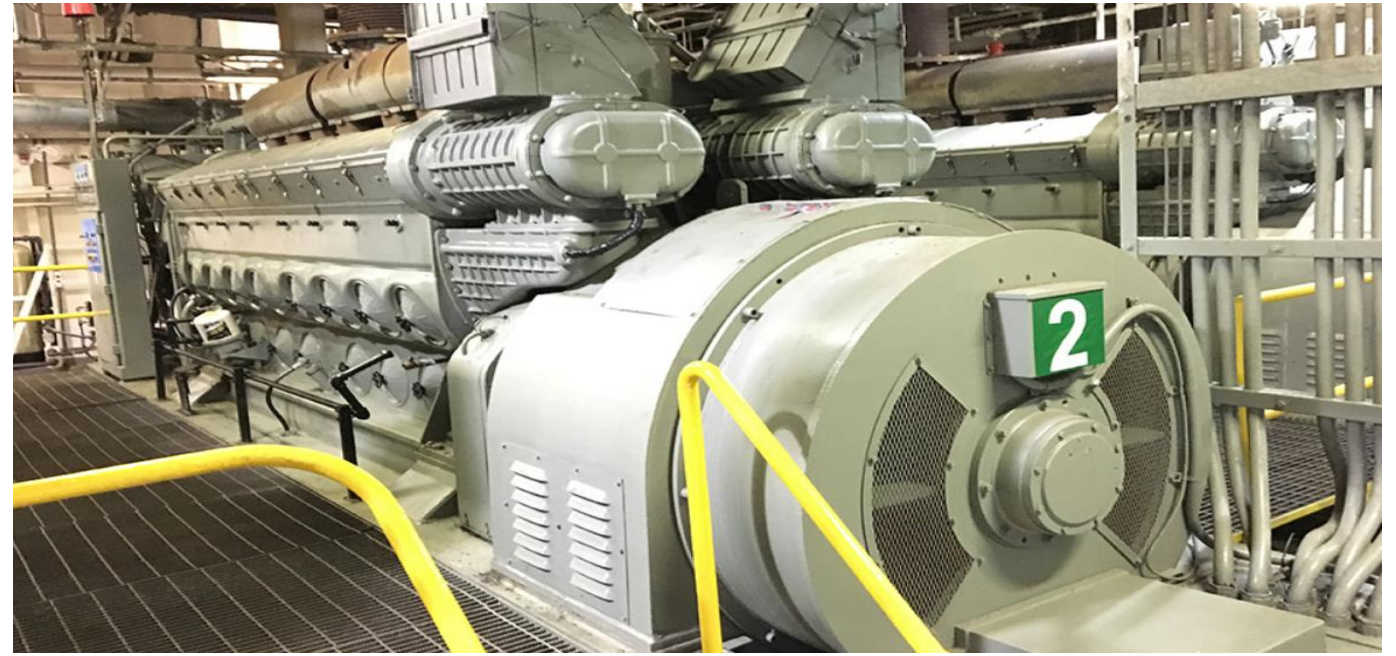
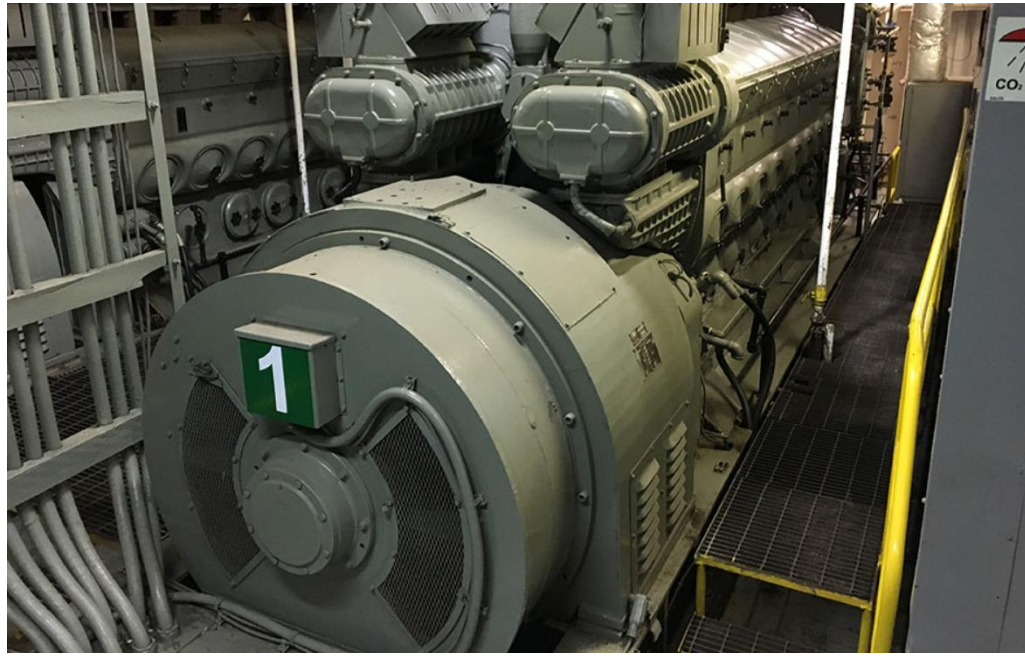
DECK VIEW



Machine Room



Machine Room



Machine Room



Machine Room





DECK VIEW





